

# MegaLine<sup>®</sup> Connect45 Pro Plug

## field-attachable RJ45 connector

Category 6<sub>A</sub>

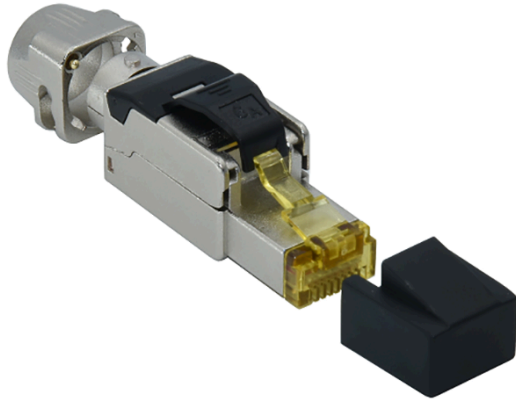


Illustration similar

### Description

The RJ45 connector for creating an end-to-end connection can be connected directly to data cables with a rigid or flexible conductor without special tools.

### Properties / applications

The performance characteristics correspond to Cat. 6<sub>A</sub> (ISO/IEC) up to 500 MHz. The requirements of the channel and permanent link class E<sub>A</sub> according to ISO/IEC 11801 Amd. 1/2 are fulfilled. The plug with toolless assembly is fully compatible with all system components of MegaLine<sup>®</sup> Connect45 Pro product family.

For installation in structured cabling acc.to ISO/IEC 11801 and EN 50173 and for transmission of analog and digital voice, image and data signals.

### Constructive characteristics

Material (insulating parts)	Polycarbonat
Material (dust protection flap)	Plastic PE
Material	FR4 (printed circuit board)
Material contact area	Gold plating
Gold plating in contact area	1 μ
Dust protection	dust protection cap

### Construction

Material (housing)	Full metal; die-cast zinc, nickel-plated
Material	FR4 (printed circuit board)
Cable entrance	max. 8,8 mm

### Electrical characteristics

Temperature range	-15 °C - +60 °C
Insertion force (max.)	30 N
Insertion cycles (module cable plug) (min.)	750

# MegaLine<sup>®</sup> Connect45 Pro Plug

## field-attachable RJ45 connector

Category 6<sub>A</sub>

### Connections

Mating face	RJ45
Contacts	toolless
suitable for conductor cross-section (AWG)	AWG 22/1, AWG 23/1, AWG 24/1, AWG 26/1, AWG 23/7, AWG 24/7, AWG 26/7

### Electrical characteristics (LF) at 20 °C

Contact resistance	max.	5 mΩ
Insulation resistance between contacts	min.	500 MΩ
Dielectric strength contact-contact	min.	1000 V DC/AC
Current rating (50 °C)		0.8 A

### Dimensions

Width	13.9 mm
Height	17.9 mm
Depth	50.4 mm

### Standards, certificates and approvals

Connector standard	IEC 60603-7
Mating durability	750 min.
Cabling standard	ISO/IEC 11801, EN 50173
Power supply	IEEE 802.3bt (4PPoE)
Degree of protection (IP)	IP20
Chemical continuance	Conform to RoHS and REACH

### Scope of supply

Housing, copper foil, dust protection cap.

#### Product name

field-attachable RJ45 connector

#### Part number

KDA0N50M1000001